

## Repair

Repair kit (KIT-RPR-6000L or R)		
Item	Description	Qty.
⑥	Bumper spring	1
⑦	Handle spring	1
③⑦	Timer spring	1
②①	Step jaw	1
②②	Wedge	1
⑩	Bushing, 7/16"	1
⑮	Bushing, 5/16"	1
⑰	Bushing, 1 1/4"	1
⑫	Hex lock nut, 1/2" - 13	3

Wedge-stop rod kit (KIT-ROD-1108)		
Item	Description	Qty.
①	Wedge-stop rod nut	1
②	Flat washer, 5/8" I.D.	2
③	Wedge-stop rod spring	1
④	Wedge-stop rod	1
⑤	Cotter pin, 3/16" x 1"	1

Secondary lock kit (KIT-LAT-6000L or R)		
Item	Description	Qty.
⑦	Handle spring	1
⑧	Hex head bolt, 1/2" - 13	1
⑨	Flat washer, 1/2" I.D.	2
⑩	Bushing, 7/16"	1
⑪	Secondary lock	1
⑫	Hex lock nut, 1/2" - 13	1
⑤	Cotter pin, 3/16" x 1"	1

Spring kit (KIT-SPRING)		
Item	Description	Qty.
⑥	Bumper spring	1
⑦	Handle spring	1
⑰	Timer spring	1

Pull handle kit (KIT-PUL-6000L or R)		
Item	Description	Qty.
⑬	Pull handle	1
⑭	Flat washer, 1/2" I.D.	1
⑤	Cotter pin, 3/16" x 1"	1

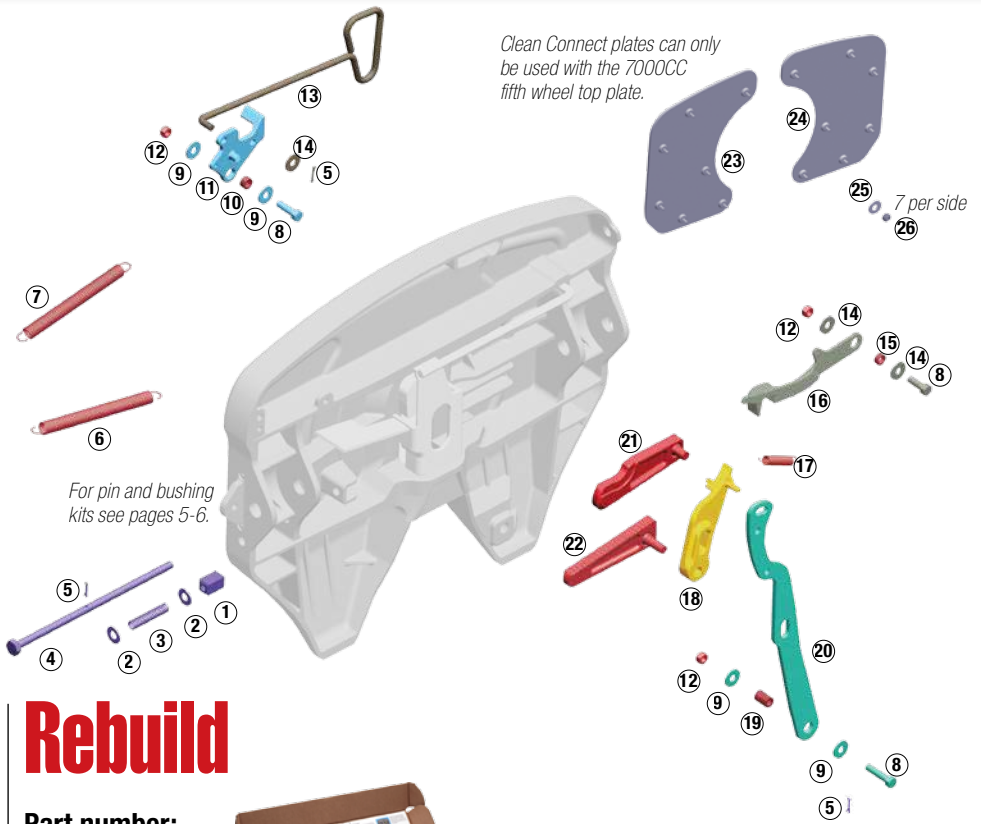
Bumper kit (KIT-BPR-6000L or R)		
Item	Description	Qty.
⑫	Hex lock nut, 1/2" - 13	1
⑭	Flat washer, 1/2" I.D.	2
⑮	Bushing	1
⑧	Hex head bolt, 1/2" - 13	1
⑯	Bumper	1
⑥	Bumper spring	1

Timer kit (KIT-TMR-6000L or R)		
Item	Description	Qty.
⑰	Timer spring	1
⑱	Timer	1
⑫	Hex lock nut, 1/2" - 13	1
⑤	Hair pin cotter	1

Operating handle kit (KIT-OPR-6000)		
Item	Description	Qty.
⑩	Bushing, 7/16"	1
⑮	Bushing, 5/16"	1
⑰	Bushing, 1 1/4"	1
⑫	Hex lock nut, 1/2" - 13	3
⑨	Flat washer, 1/2" I.D.	2
⑧	Hex head bolt, 1/2" - 13	1
⑳	Operating handle	1
⑤	Hair pin cotter	1



Clean Connect plates can only be used with the 7000CC fifth wheel top plate.

For pin and bushing kits see pages 5-6.

## Rebuild

### Part number: KIT-RX-67NTL

Major rebuild kit for left side (driver) handle release NT/6000/7000/7000CC/H7 top plates. Kit does not include bracket pins, bushings or Clean Connect plate kits.



- 7 kits shown at left combined in 1 saves you money
- Parts are arranged in the sequence you need them
- Complete instructions and link to video to make rebuild easy
- Reduce inventory
- Keep all the benefits of No-Slack® II technology

### Bracket pin kit (KIT-PIN-191)

1-piece bushing	Use if mounted to AWB, MWS,	2
Bracket pin	AWX, PSA,	2
Bracket retainer pin	FMA, XAWX	2
Cotter pin		2

### Bracket pin kit (KIT-PIN-LLB)

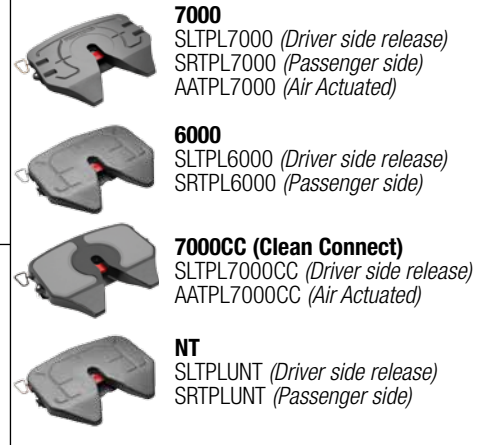
2-piece bushing	Use if mounted to LWB, MTB,	2 Pairs
Bracket pin	BSM, BSL,	2
Bracket retainer pin	ATB, PML	2
Cotter pin		2
Bracket liner		2

### Bracket pin kit (KIT-PIN-UNT)

1-piece bushing	Use if mounted to LWO or	2
Bracket pin		2
Bracket retainer pin		2
Cotter pin		2
Bracket Liner		2

## Replace

Replace or upgrade your fifth wheel top plate.



### 7000CC Options

Clean Connect plate kits (7000CC)		
Item	Description	Qty.
<b>(CCR-PLATES-R)</b>		
⑳	Right CC plate	1
㉕	Flat washer	7
㉖	Hex lock nut	7
<b>(CCR-PLATES-L)</b>		
㉔	Left CC plate	1
㉕	Flat washer	7
㉖	Hex lock nut	7

# Top Plate Repair Kits

## Repair kit (KIT-RPR-6000L or R)



Item	Qty.
Bumper spring	1
Handle spring	1
Timer spring	1
Step jaw	1
Wedge	1
Bushing, 7/16"	1
Bushing, 5/16"	1
Bushing, 1 1/4"	1
Hex lock nut, 1/2" - 13	3

## Secondary lock kit (KIT-LAT-6000L or R)



Item	Qty.
Handle spring	1
Hex head bolt, 1/2" - 13	1
Flat washer, 1/2" I.D.	2
Bushing, 7/16"	1
Secondary lock	1
Hex lock nut, 1/2" - 13	1
Cotter pin, 3/16" x 1"	1

## Pull handle kit (KIT-PUL-6000L or R)



Item	Qty.
Pull handle	1
Flat washer, 1/2" I.D.	1
Cotter pin, 3/16" x 1"	1

## Timer kit (KIT-TMR-6000L or R)



Item	Qty.
Timer spring	1
Timer	1
Hex lock nut, 1/2" - 13	1
Hair pin cotter	1

## Wedge-stop rod kit (KIT-ROD-1108)



Item	Qty.
Wedge-stop rod nut	1
Flat washer, 5/8" I.D.	2
Wedge-stop rod spring	1
Wedge-stop rod	1
Cotter pin, 3/16" x 1"	1

## Spring kit (KIT-SPRING)



Item	Qty.
Bumper spring	1
Handle spring	1
Timer spring	1

## Bumper kit (KIT-BPR-6000L or R)



Item	Qty.
Hex lock nut, 1/2" - 13	1
Flat washer, 1/2" I.D.	2
Bushing	1
Hex head bolt, 1/2" - 13	1
Bumper	1
Bumper spring	1

## Operating handle kit (KIT-OPR-6000)



Item	Qty.
Bushing, 7/16"	1
Bushing, 5/16"	1
Bushing, 1 1/4"	1
Hex lock nut, 1/2" - 13	3
Flat washer, 1/2" I.D.	2
Hex head bolt, 1/2" - 13	1
Operating handle	1
Hair pin cotter	1

# Top Plate Repair Kits

## H7 Kit Options

### Operating handle kit (KIT-OPR-H7)



Item	Qty.
Bushing, 7/16"	1
Bushing, 5/16"	1
Bushing, 9/16"	1
Hex lock nut, 1/2" - 13	3
Flat washer, 1/2" I.D.	2
Hex head bolt, 1/2" - 13	1
Heavy Duty Operating Handle	1
Hair pin cotter	1

## H7 Kit Options

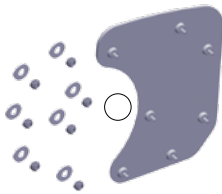
### Pull handle kit (KIT-PUL-H7)



Item	Qty.
Heavy Duty Pull Handle	1
Hex lock nut, 1/2" - 13	1

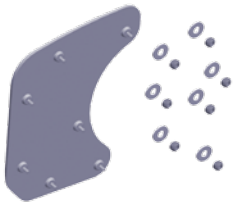
## 7000CC Kit Options

### Left Clean Connect Plate kit (CCR-PLATES-L)



Item	Qty.
Left CC plate	1
Flat washer	7
Hex lock nut	7

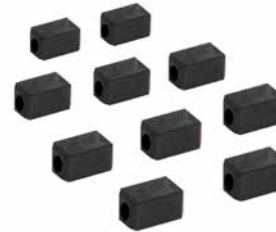
### Right Clean Connect Plate kit (CCR-PLATES-R)



Item	Qty.
Right CC plate	1
Flat washer	7
Hex lock nut	7

## Miscellaneous Kit Options

### Wedge Stop Rod Nut Kit (NUT-319)



Item	Qty.
Wedge Stop Rod Nut	10

### Timer Spring Kit (CD-SPR-236)



Item	Qty.
Timer Spring	6

## Rebuild

**Part number:  
KIT-RX-67NTL**

*Major rebuild kit for left side  
(driver) handle release  
NT/6000/7000/  
7000CC/ H7 top plates.*

*Kit does not include bracket  
pins, bushings or Clean  
Connect plate kits.*



- 7 kits combined in 1 saves you money
- Parts are arranged in the sequence you need them
- Complete instructions and link to video to make rebuild easy
- Reduce inventory
- Keep all the benefits of No-Slack® II technology

## Replace

Replace or upgrade your fifth wheel top plate.



**7000**  
SLTPL7000 (Driver side release)  
SRTPL7000 (Passenger side)  
AATPL7000 (Air Actuated)



**6000**  
SLTPL6000 (Driver side release)  
SRTPL6000 (Passenger side)



**7000CC (Clean Connect)**  
SLTPL7000CC (Driver side release)  
AATPL7000CC (Air Actuated)

# Pin and Bushing Kits

**Designed to mount 6000, 7000, 7000CC on:  
AWB, MWS, PSA brackets**  
*See next page to help identify brackets*

**Designed to mount 6000, 7000, 7000CC  
on: LWB, MTB, BSM, ATB, PMA, PML, BSL**  
*See next page to help identify brackets*

## Bracket pin kit (KIT-PIN-191)



Item	Qty.
1-piece bushing	2
Bracket pin	2
Bracket retainer pin	2
Cotter pin	2

## Bracket pin kit (KIT-PIN-LLB)



Item	Qty.
2-piece bushing	2 Pairs
Bracket pin	2
Bracket retainer pin	2
Cotter pin	2
Bracket liner	2

## Bushing kit (BSH-150)



Item	Qty.
1-piece bushing	2

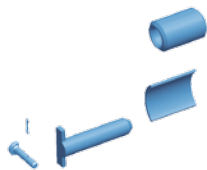
## Bushing kit (BSH-LLB)



Item	Qty.
2-piece bushing	2 Pairs
Bracket liner	2

**Designed to mount UNT or NT top plates**  
*See next page to help identify brackets*

## Bracket pin kit (KIT-PIN-UNT)



Item	Qty.
1-piece bushing	2
Bracket pin	2
Bracket retainer pin	2
Cotter pin	2
Bracket Liner	2

# No-Slack® II NT/6000/7000/7000CC series pin and bushing



**6000**  
SLTPL6000 (Driver side release)  
SRTPL6000 (Passenger side)



**7000**  
SLTPL7000 (Driver side release)  
SRTPL7000 (Passenger side)  
AATPL7000 (Air Actuated)



**7000CC (Clean Connect)**  
SLTPL7000CC (Driver side release)  
AATPL7000CC (Air Actuated)

## Pin and Bushing Kit (KIT-PIN-191)

Designed to mount 6000, 7000, 7000CC on:  
AWB, MWS, PSA and FMA brackets



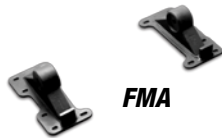
**AWB**



**MWS**



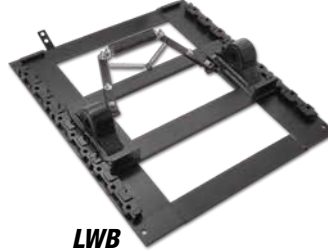
**PSA**



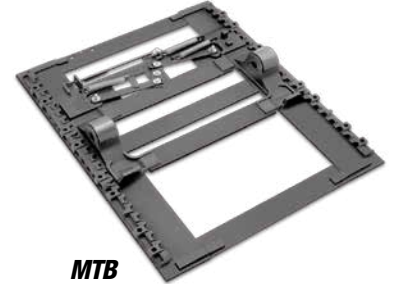
**FMA**

## Pin and Bushing Kit (KIT-PIN-LLB)

Designed to mount 6000, 7000, 7000CC  
on: LWB, MTB, ATB, PMA, BSL, PML



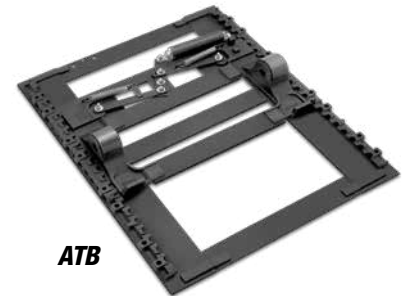
**LWB**



**MTB**



**BSL**



**ATB**



**PML**



**NT**  
SLTPLUNT (Driver side release)  
SRTPLUNT (Passenger side)

## KIT-PIN-UNT

Designed to mount NT top plate or NT, 3000 and 4000  
mounts: LWO and APB brackets



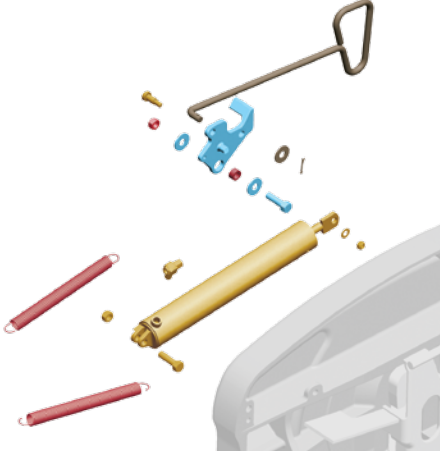
**APB**



**LWO**

# Other Kits

**Air actuated kit (KIT-AA-6000L or R)**



**KIT-AA-6000L or R**



This kit includes the parts mounted to the fifth wheel. If you are upgrading from manual to air actuated you will also need KIT-AIR-DASH which includes the parts required to complete the in-dash installation.

Description	Quantity
Hex head bolt	1
Hex lock nut	1
Air cylinder	1
Mini-matic jumbo exhaust valve	1
Hex lock nut	1
Flat washer	1
Shoulder bolt	1
Springs	2

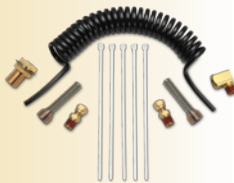
## KIT-AIR-DASH



Kit to complete the in-dash installation.

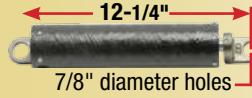
## KIT-AIR-COIL

Parts required to connect the air actuated fifth wheel or fifth wheel air sliders to the air system.



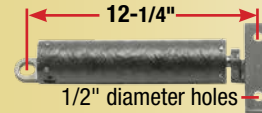
## Air cylinders for air slide brackets

### CYL-COMP



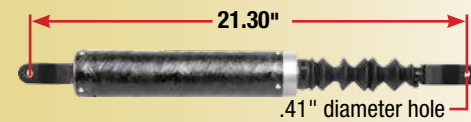
Use on ATB, AWB

### CYL-XAWX



Use on AWX, XAWX

### CYL-LWO-LWI



Use on LWO

### CYLLWB

Use on LWB